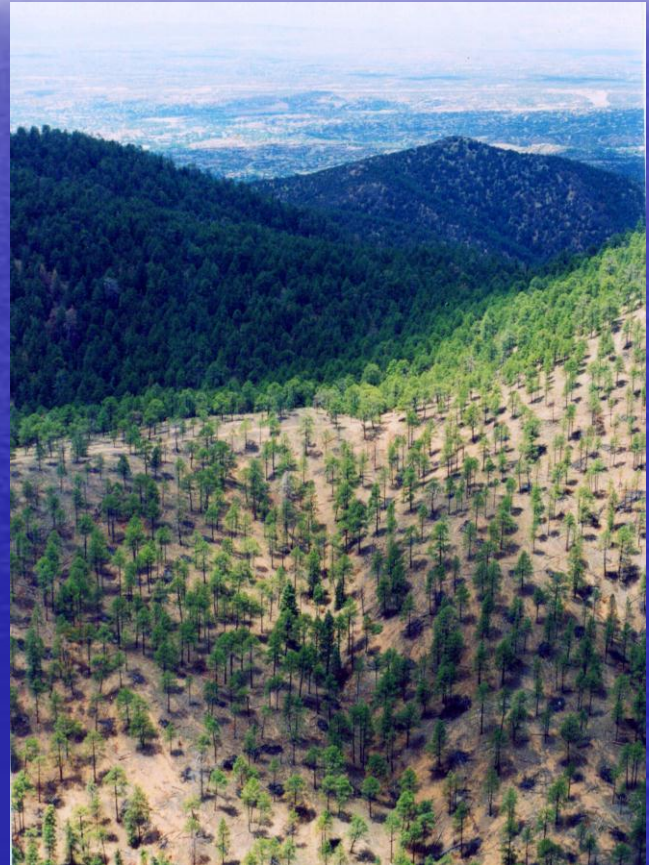


What's next?

The challenge now is to provide a framework and funding mechanism for long term maintenance, including protection from catastrophic fire, soil erosion, and invasive plants.

USFS Collaborative Forestry Restoration Program (CFRP)

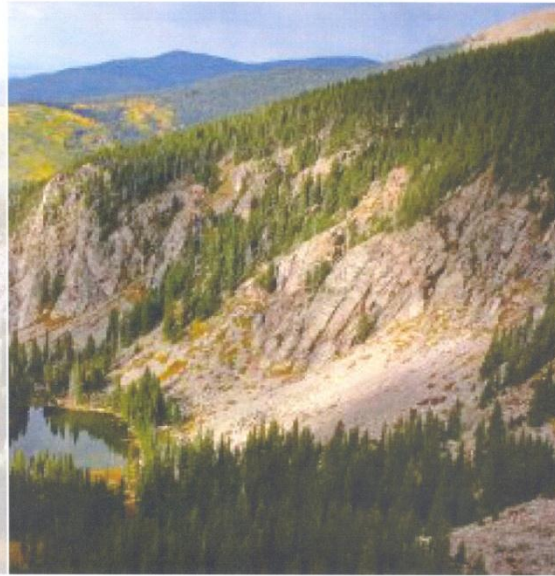
- Partners:
 - City of Santa Fe, USFS Espanola District, Santa Fe Watershed Association and the Nature Conservancy
- Goal:
 - Develop a plan for long term maintenance and monitoring of the watershed
- Innovation:
 - Explore possibility of payment for ecosystem services



**Santa Fe Municipal Watershed
Plan. 2010-2029**

Prepared with funding from the
Collaborative Forest Restoration Program

February 18, 2009



Plan Authors

Vegetation Plan: Ellis Margolis,
University of Arizona and Melissa
Savage, University of California, Los
Angeles

Water Plan: Dale Lyons, City of Santa
Fe Water Division

Outreach Plan: Pamela Dupzyk, Santa
Fe Watershed Association

Financial Plan: Laura McCarthy, The
Nature
Conservancy

Plan Compiled and Edited by Tori Derr,
Crane Collaborations

Santa Fe Watershed Association
1413 2nd Street, #3
Santa Fe, NM 87505

This master plan provides a framework and recommendations for long term management, outreach, and funding for the Santa Fe Municipal Watershed. The plan addresses four areas critical to the maintenance of the watershed: (i) vegetation management and fire use; (ii) water management; (iii) public awareness and outreach; and (iv) financial management based on Payment for Ecosystem Services. The cost to retain the restored forest condition is estimated at \$4.3 million, an average of \$200,000 per year. In contrast, the avoided cost that would result from a 7,000 acre fire in the watershed is estimated at \$22 million. The likelihood of such a fire is 1 in 5 in any given year.

Development of this plan was funded from the USDA Forest Service Collaborative Forest Restoration Program with a collaborative grant (CFRP #27-07) that included the Española Ranger District of the Santa Fe National Forest, the Santa Fe Watershed Association, the City of Santa Fe Water Division, City of Santa Fe Fire Department and the Nature Conservancy.

Watershed Plan 2009

- Water Management Recommendations: Monitor and analyze watery quantity, quality as well as wildlife habitat and ecosystem function
- Education and Outreach Recommendations: Offer watershed education to the public and through public schools (4th/5th grade primarily)
- Financial Management Recommendations: Use a payment for ecosystem service model to allow water users to help fund the work that needs to occur to maintain the conditions that have been achieved to date.
- Vegetation Management/Fire use Recommendations: Maintenance burning where fuel loads have been reduced by piling and burning, options to consider around and in the Pecos Wilderness, and monitoring for the riparian areas between reservoirs.

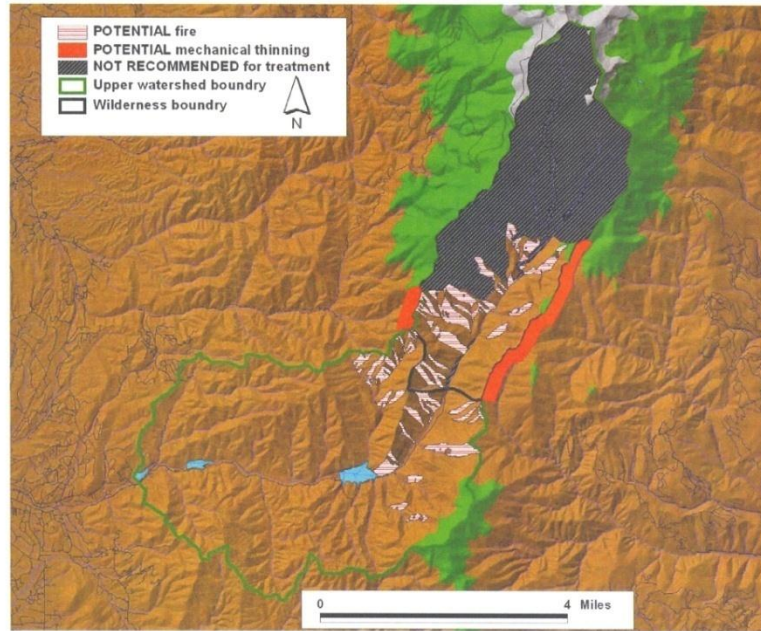


Figure 3. Treatment recommendation map for the upper Santa Fe Watershed Wilderness Area and mixed-conifer forest above McClure Reservoir.

Payment for Ecosystem Services

- Indirect services valuation = cost of monitoring and maintenance
- Average water rate payer additional cost \$6.50/yr (range \$3.13 to \$9.40)
- Recent 48% increase for BDD; decision to delay watershed mgt. fees
- Water Trust Board \$1.3 mil. grant

WS Mgt. Plan Cost Summary

YEAR	FIRE/FUEL MGT		WATER MGT			EDUCATION & OUTREACH			
	WTB	USFS	WTB	USFS	CITY	WTB	USFS	CITY	SFWA
2010	\$166,050	\$166,050	\$0	\$0	\$60,803	\$43,200	\$3,100	\$7,300	\$6,650
2011	\$348,710	\$348,710	\$20,000	\$5,000	\$49,483	\$24,400	\$2,100	\$3,300	\$6,250
2012	\$180,550	\$180,550	\$0	\$0	\$59,483	\$33,800	\$2,100	\$1,300	\$6,250
2013	\$170,550	\$170,550	\$20,000	\$5,000	\$53,483	\$27,400	\$2,100	\$3,300	\$6,250
2014	\$117,000	\$117,000	\$0	\$0	\$49,483	\$32,800	\$2,100	\$3,300	\$6,250
TOTAL 5-YR COST	\$982,860	\$982,860	\$40,000	\$10,000	\$272,735	\$161,600	\$11,500	\$18,500	\$31,650

PES Implementation

- Education and outreach
 - Utility bill inserts, PSAs
 - Itemization of existing costs of watershed maintenance, including new measures under WS mgt. plan
- Phase in PES costs to water customers after 5 years