

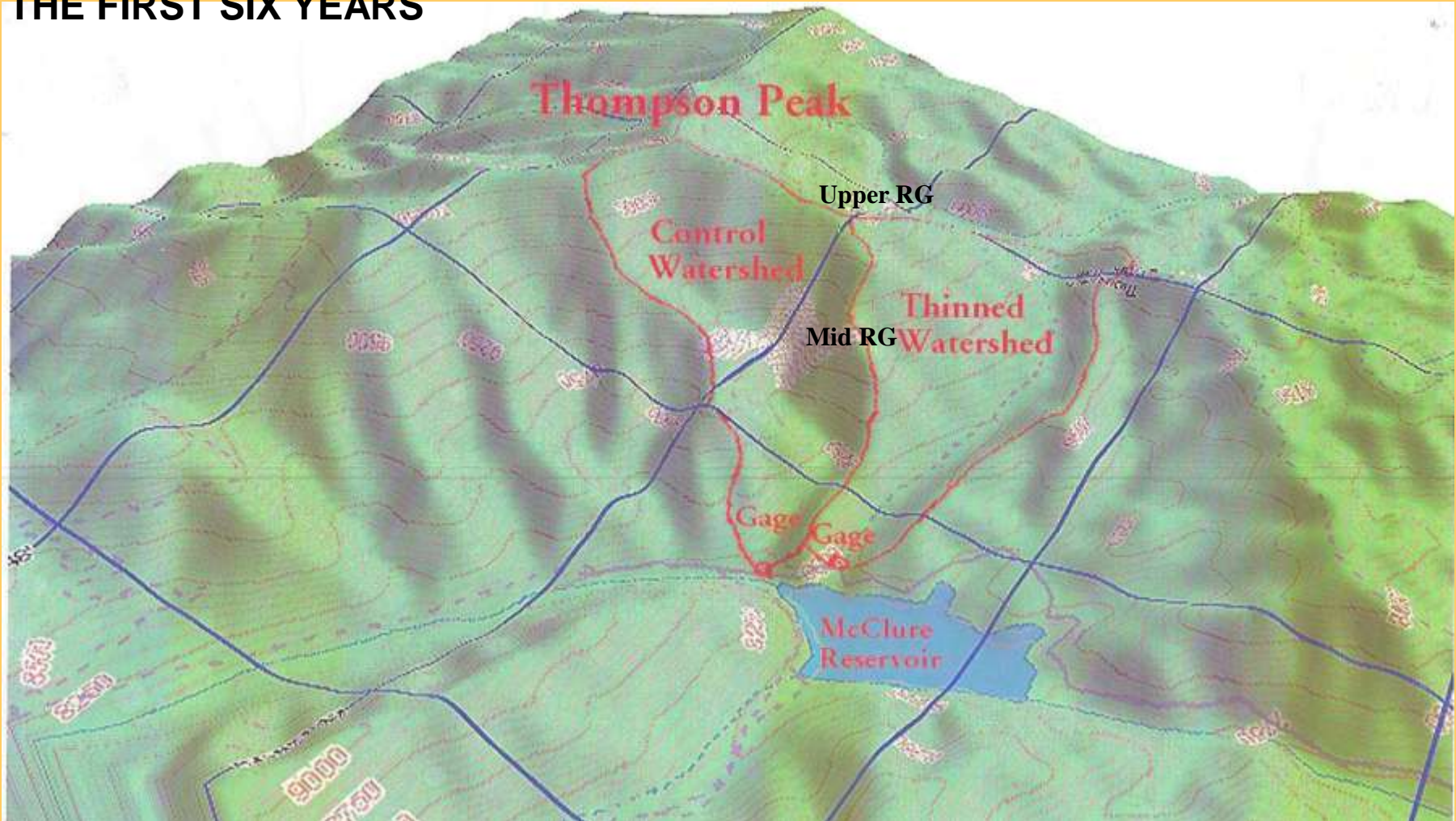


WATERSHED WEST

Engineering • Research • Restoration

SANTA FE WATERSHED PAIRED BASIN STUDY

THE FIRST SIX YEARS





WATERSHED WEST

Engineering • Research • Restoration





WATERSHED WEST

Engineering • Research • Restoration



**HAND THINNING WITH CHAIN SAWS WAS
DONE IN THE TREATED BASIN.**

SHOWN HERE BEFORE BURNING.



WATERSHED WEST

Engineering • Research • Restoration

THE RIDGE LINE SEPARATING THE TREATED AND CONTROL BASINS, AFTER BURNING





WATERSHED WEST

Engineering • Research • Restoration



**REGROWTH OF
UNDERSTORY
ONE YEAR AFTER**



WATERSHED WEST

Engineering • Research • Restoration



**MONITORING
EQUIPMENT**

TREATED BASIN



WATERSHED WEST

Engineering • Research • Restoration

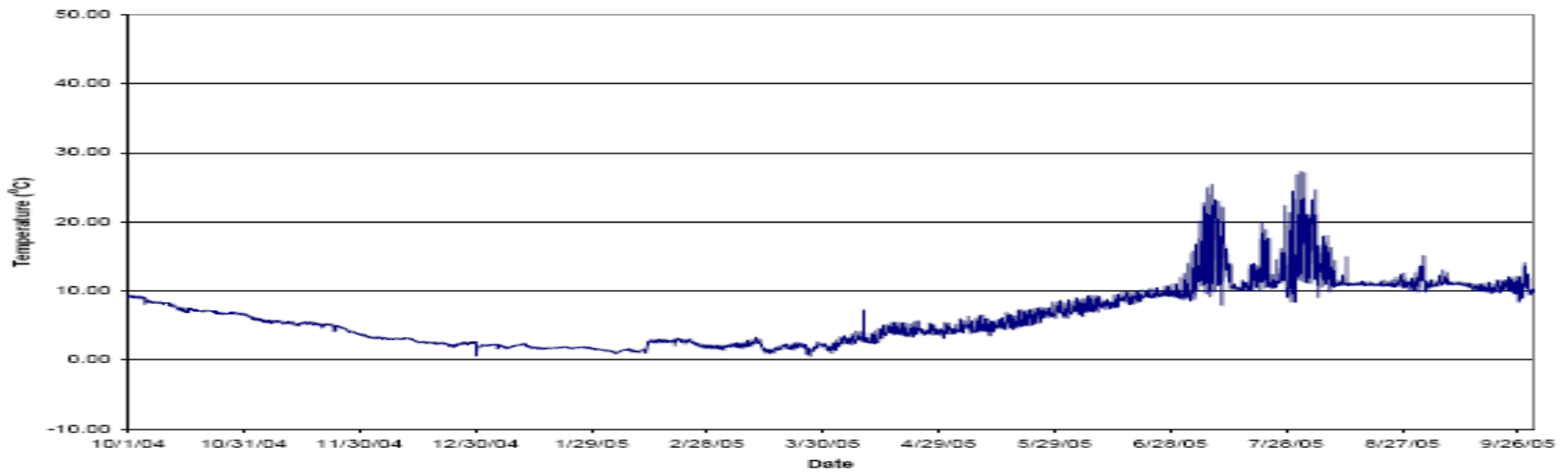
**COLLECTING DATA AT THE
MID ELEVATION RAIN GAGE**



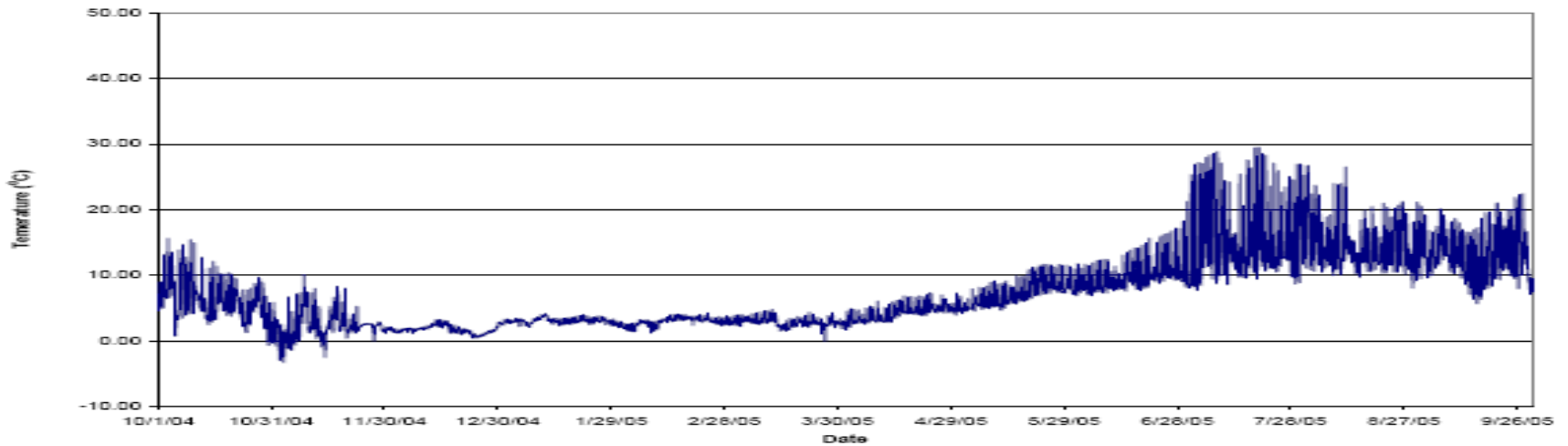


WATERSHED WEST

Engineering • Research • Restoration



PAIRED BASIN STUDY - CONTROL
Temperature
WY 2005

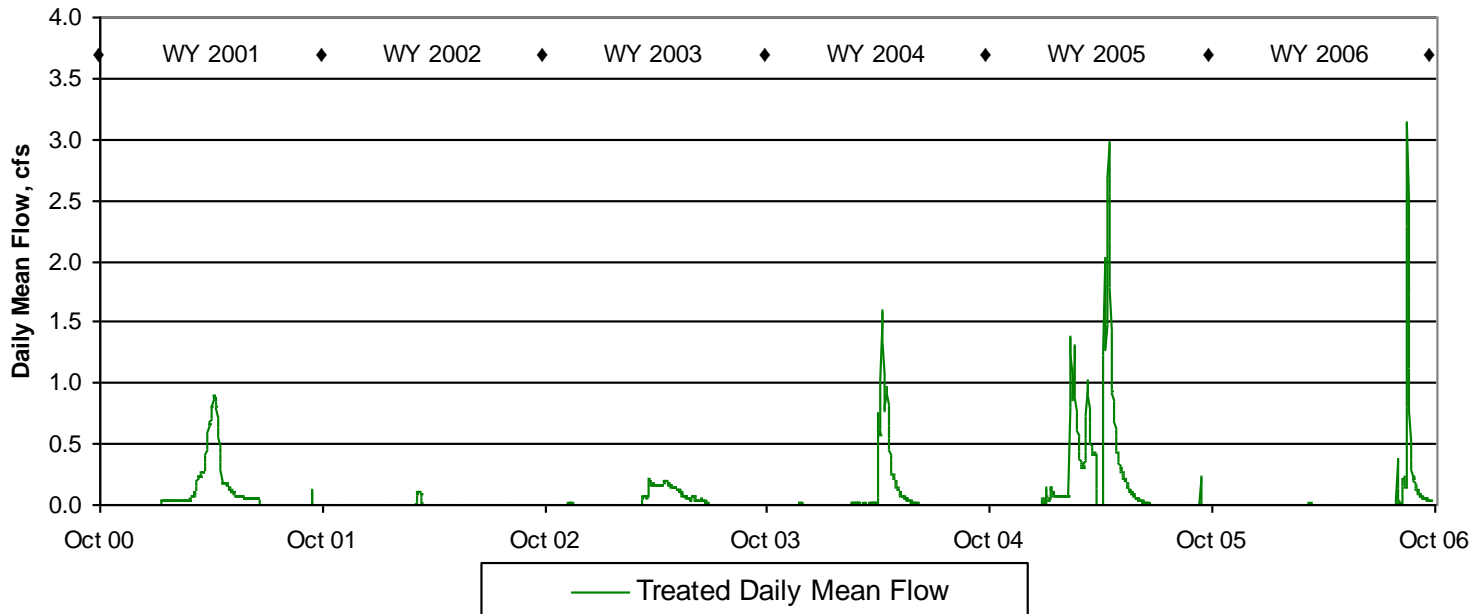
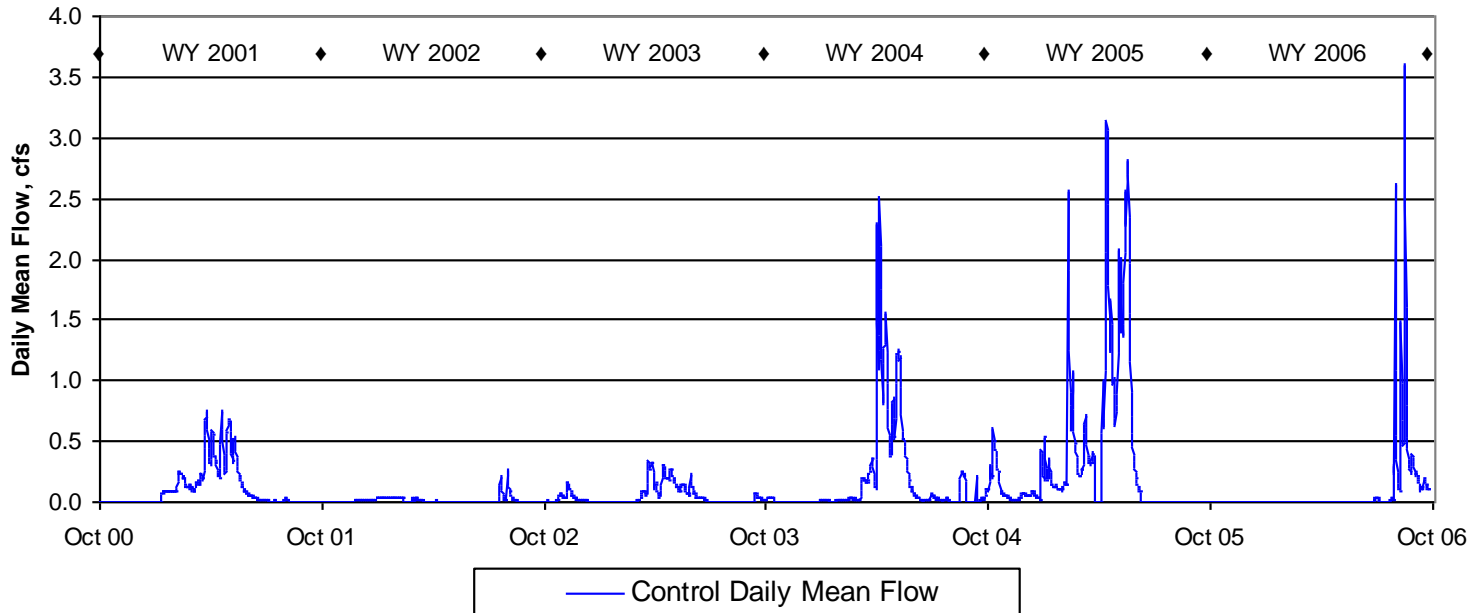


PAIRED BASIN STUDY - TREATED
Temperature
WY 2005



WATERSHED WEST

Engineer



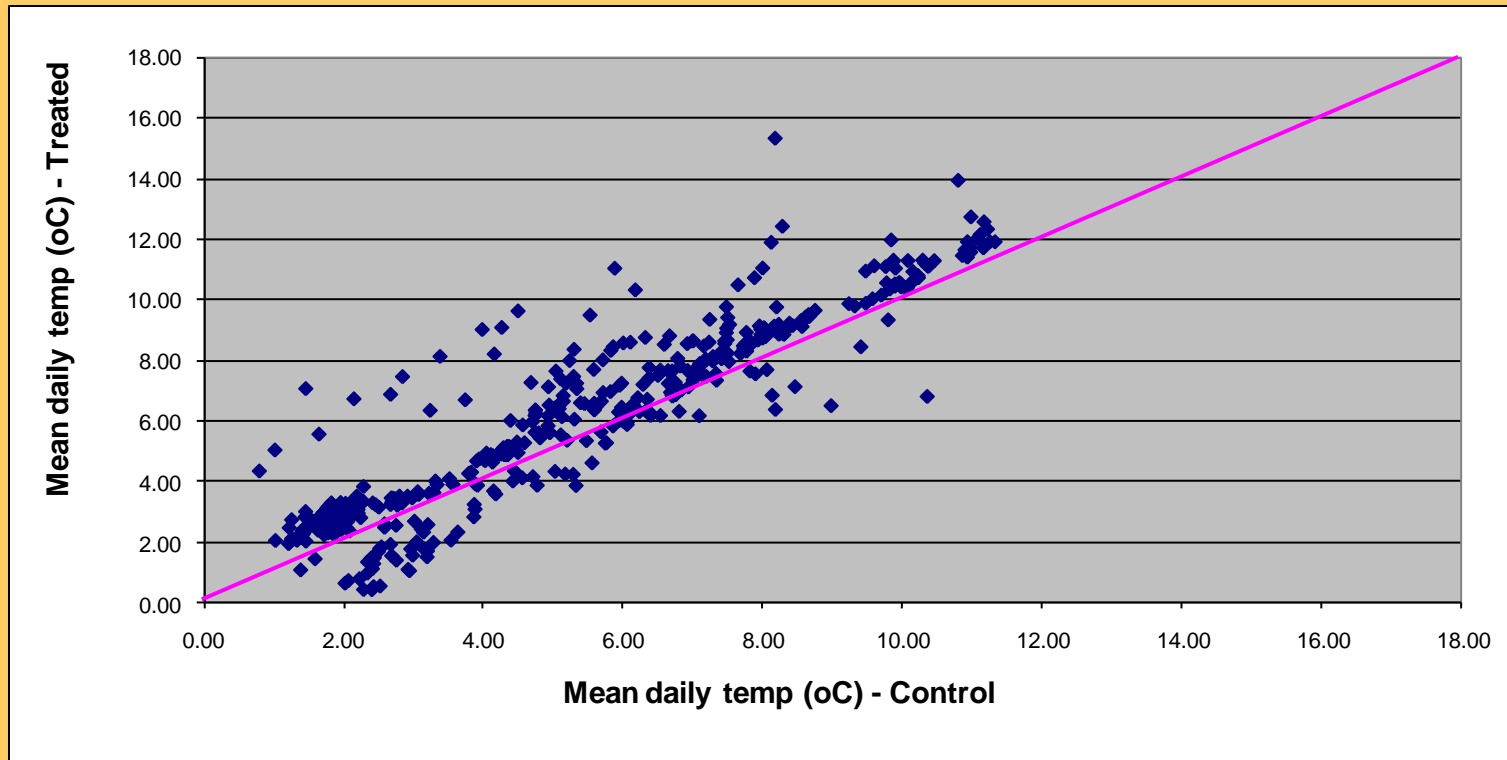


WATERSHED WEST

Engineering • Research • Restoration

TREATED BASIN WATER WAS WARMER THAN CONTROL

BOTH BASINS WERE WARMER POST-THINNING THAN DURING PRE-THINNING PERIOD



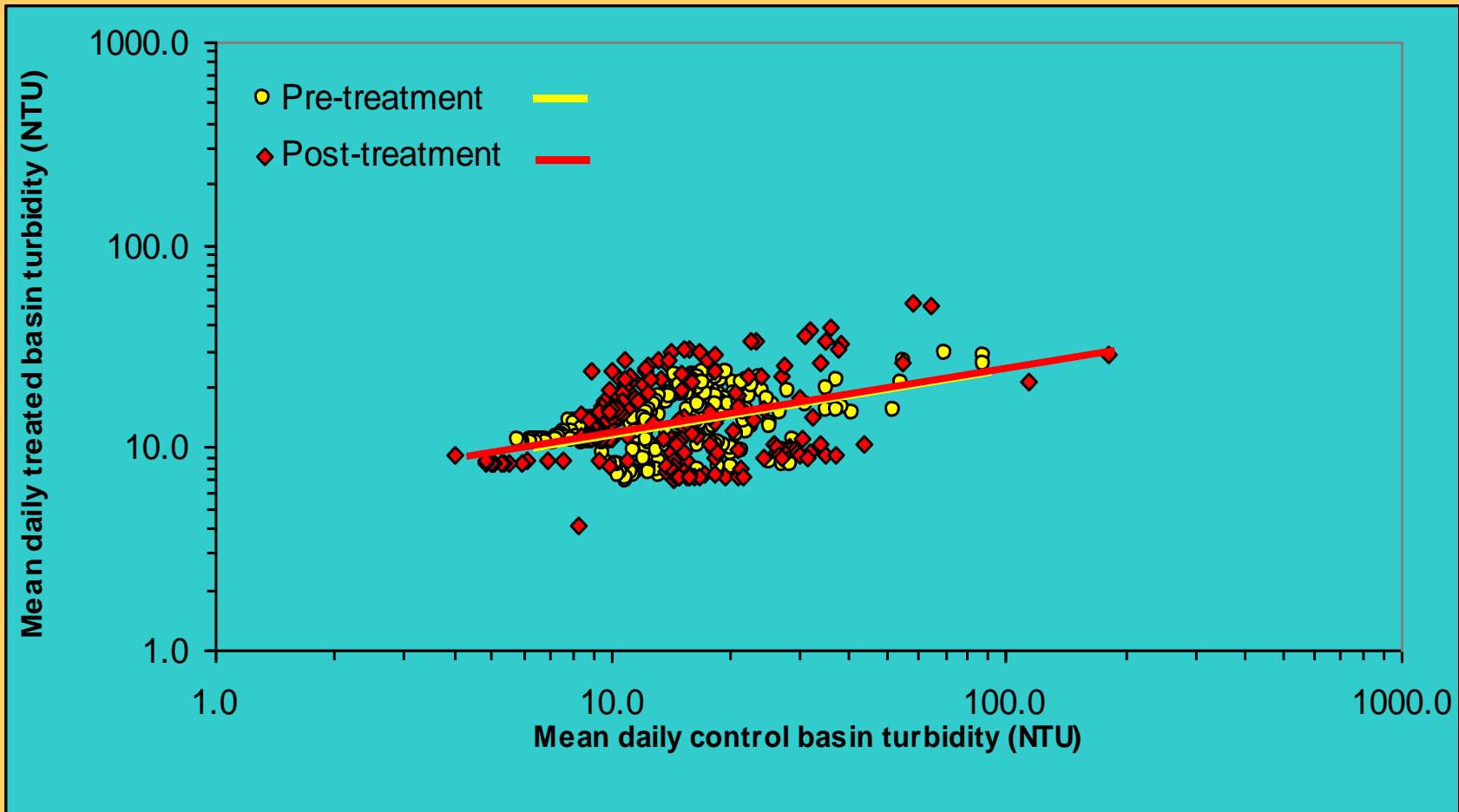


WATERSHED WEST

Engineering • Research • Restoration

**NO STATISTICAL DIFFERENCE
IN TURBIDITY DUE TO
TREATMENT**

Variable	Pre-treatment	Post-treatment
Ctl Trb	12.4	12.7
Trt Trb	13.4	13.5



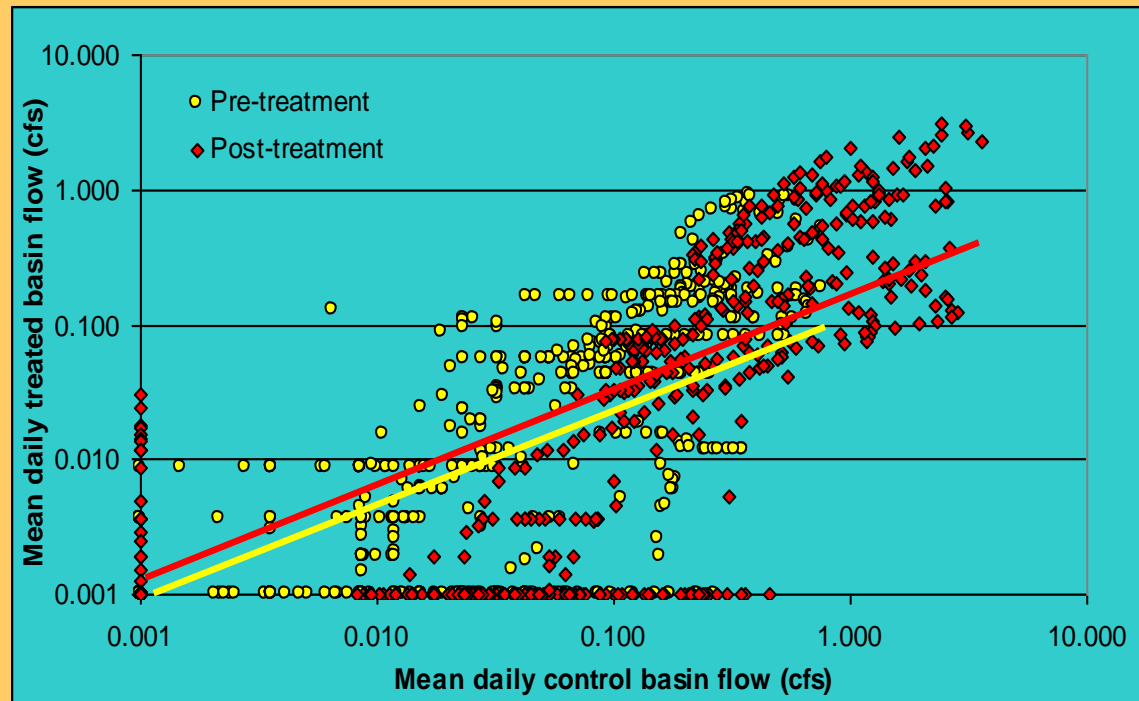


WATERSHED WEST

Engineering • Research • Restoration

REGRESSION MODELING INDICATES:

MEAN DAILY FLOW FROM TREATED BASIN GREATER AFTER TREATMENT





WATERSHED WEST

Engineering • Research • Restoration

TOTAL YIELD VARIED SIGNIFICANTLY FROM YEAR TO YEAR

