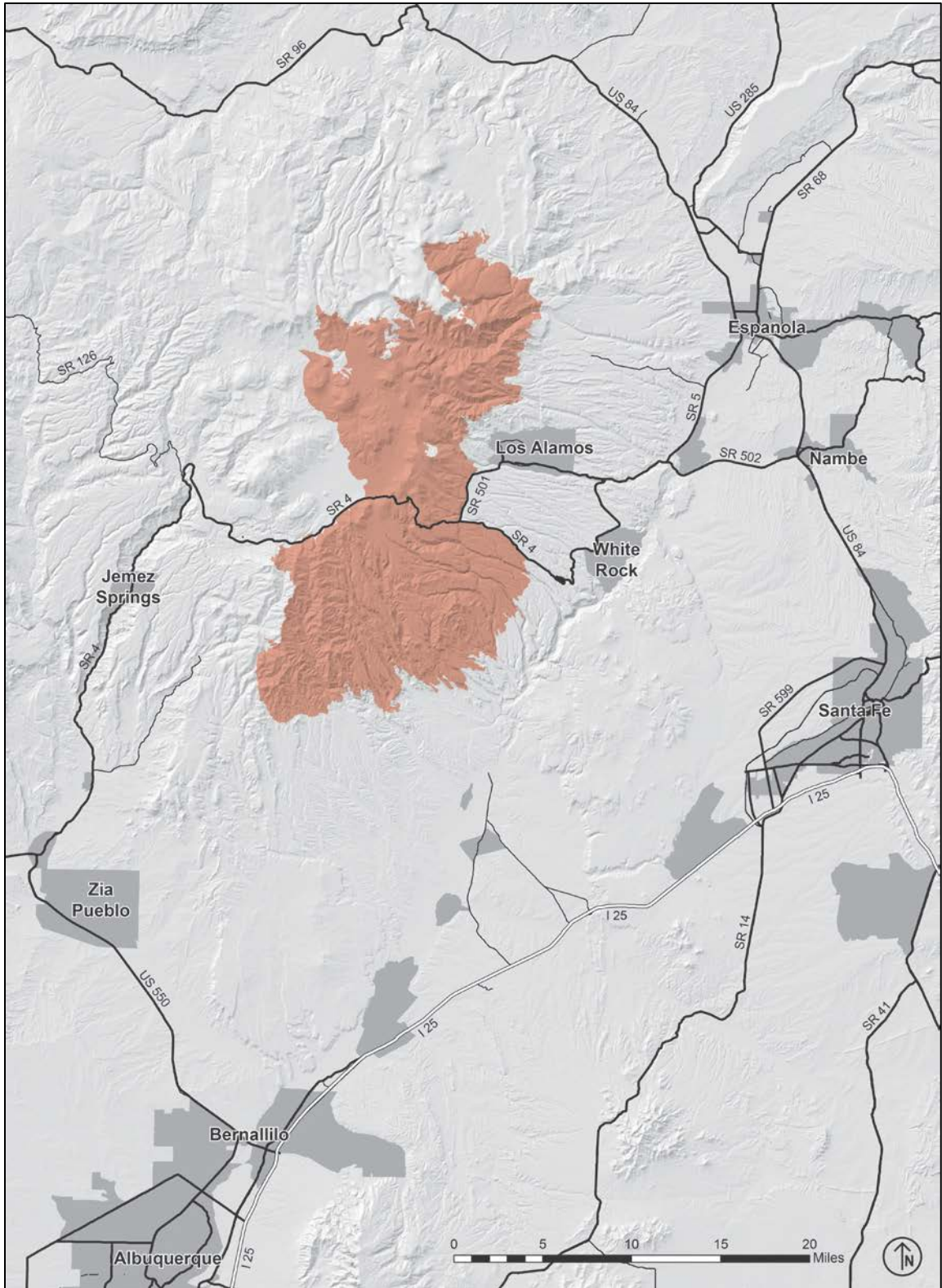
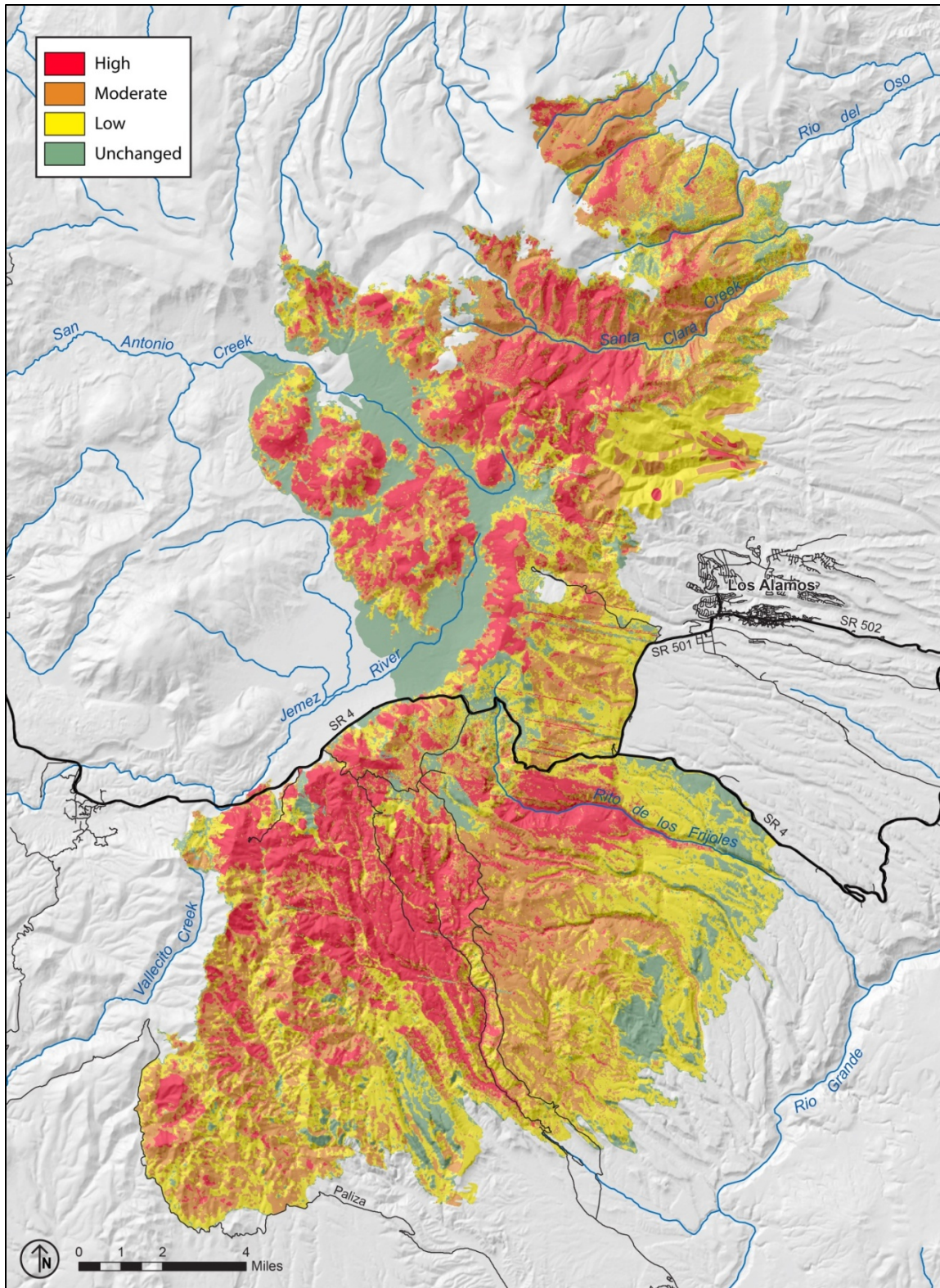


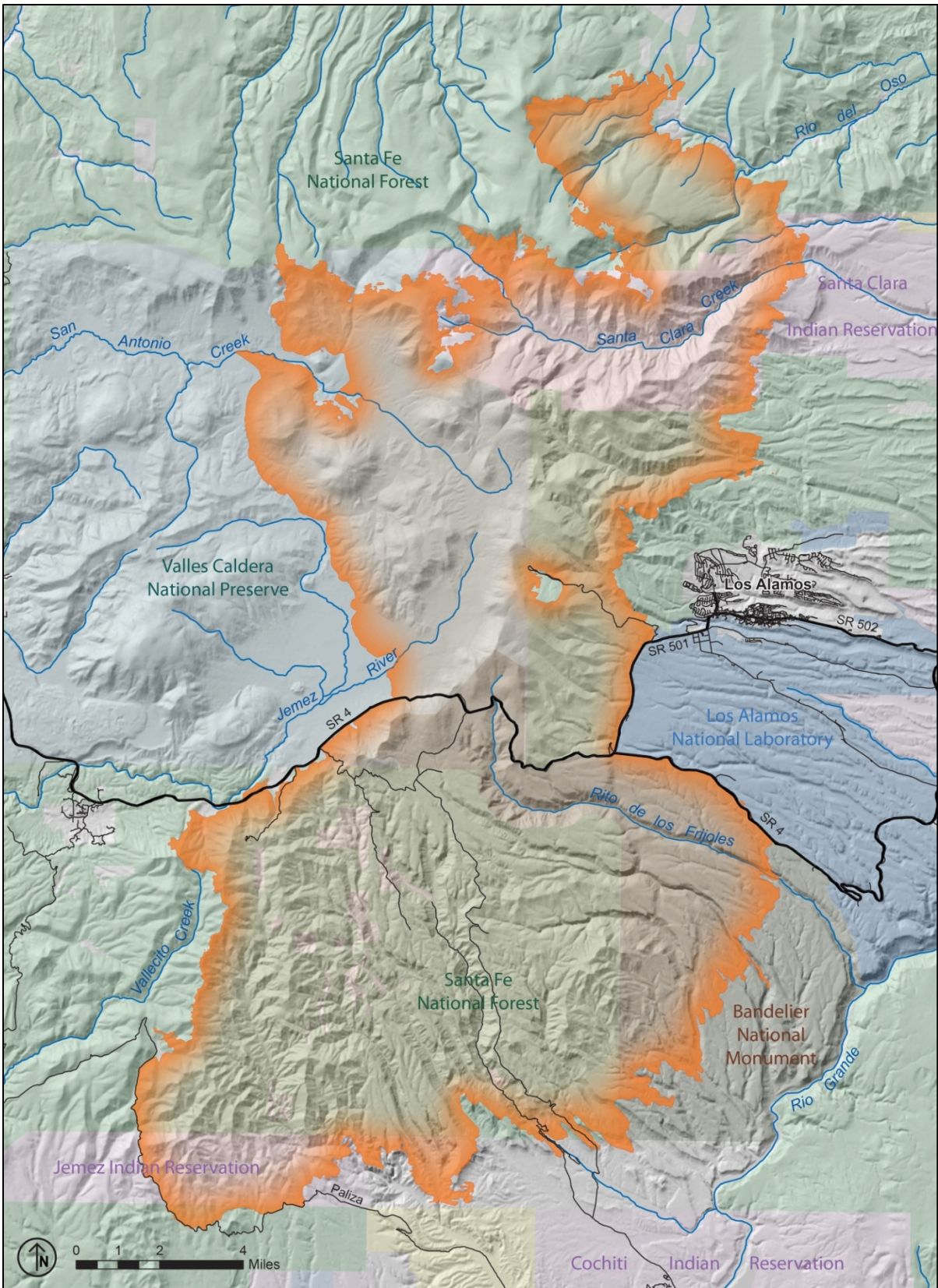
**Overlap of Las Conchas Fire with recent large wildfire in the eastern Jemez Mountains**



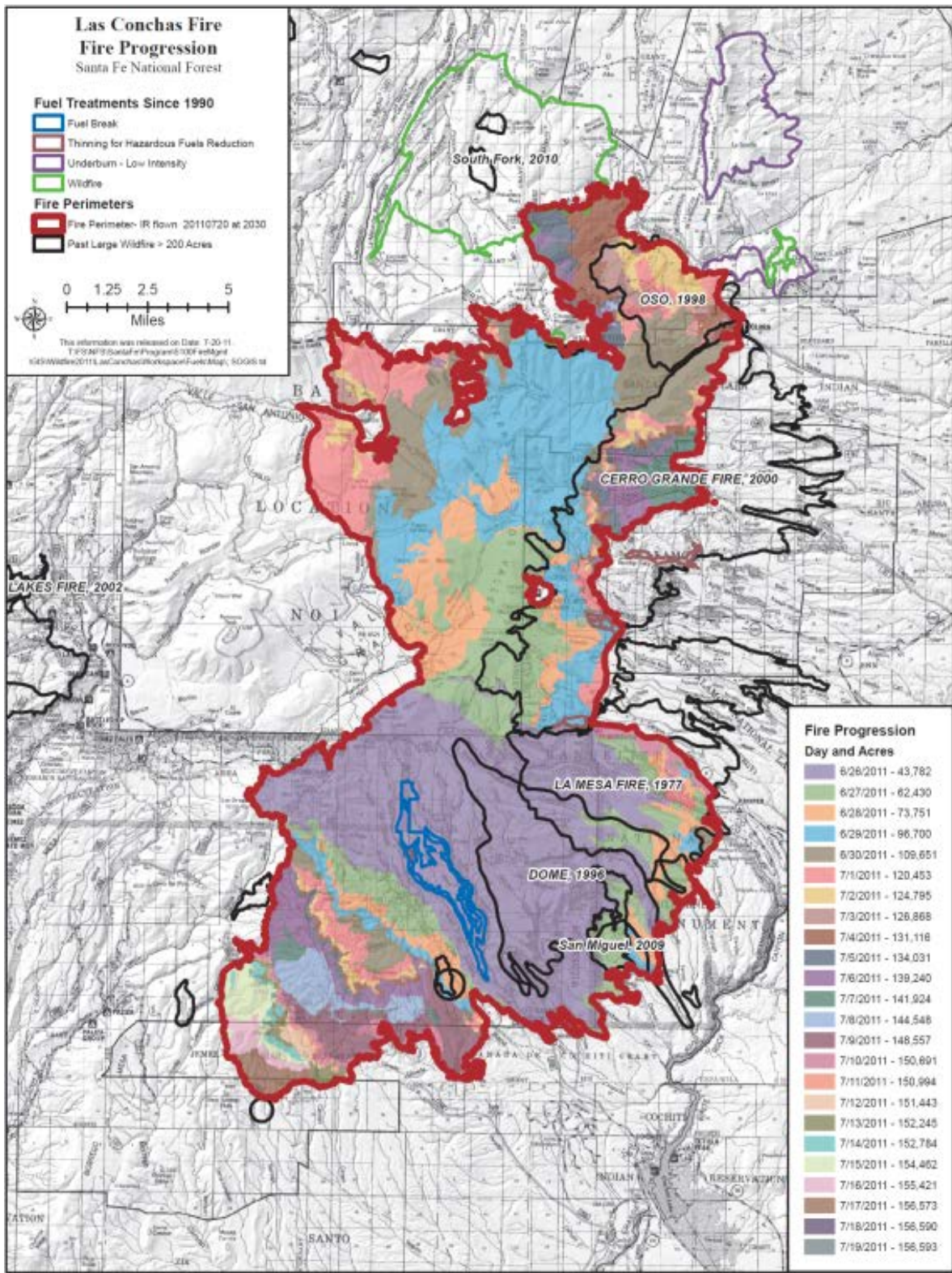
**Las Conchas Fire in Relation to Communities in Northern New Mexico**



Las Conchas Fire Severity Ratings



**Jurisdictions Affected by the Las Conchas Fire**



The areas of Cochiti Mesa highlighted in bright blue had been treated. The Red line shows the boundary of the Las Conchas Fire. Courtesy USDA Forest Service Southwest Region



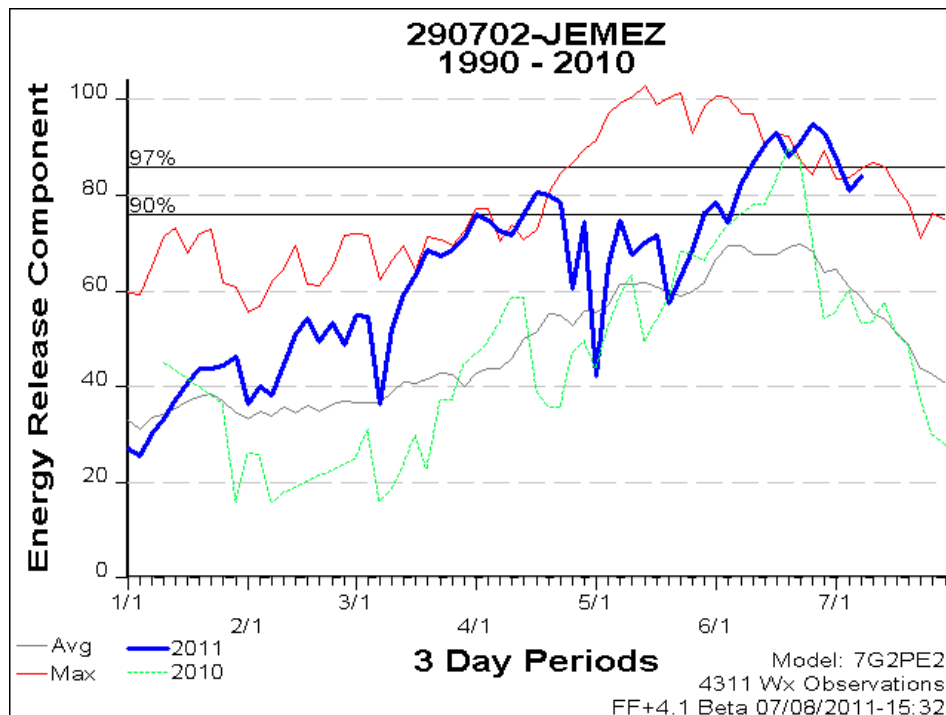
Evidence of heavy fuel loading that remained from the Dome Fire of 1996. The lines of white ash show where snags had fallen to the ground over the years and were ultimately consumed by the Las Conchas Fire when it burned through the area. Bill Armstrong, the Forest Fuels Specialist estimated that the dead fuel loading here was over 50 tons per acre prior to the Las Conchas Fire. Photo by Kari Greer USDA Forest Service



Aerial view showing lines of ash where large logs covered the ground in the Dome Fire area prior to the Las Conchas Fire. Photo by Kari Greer USDA Forest Service



Cochiti Mesa structures that survived the first day of the Las Conchas Fire. Note the narrow band of Green trees and those with red needles that had been treated and caused the fire to drop to the ground briefly when it encountered these areas. USDA Forest Service



The chart above shows the 2011 ERC values in blue relative to the average, maximum and 2010 values for the timeframe of 1990 through 2010 USDA Forest Service