



# **Communities Living with Fire and the Fire Adapted Community Learning Network**

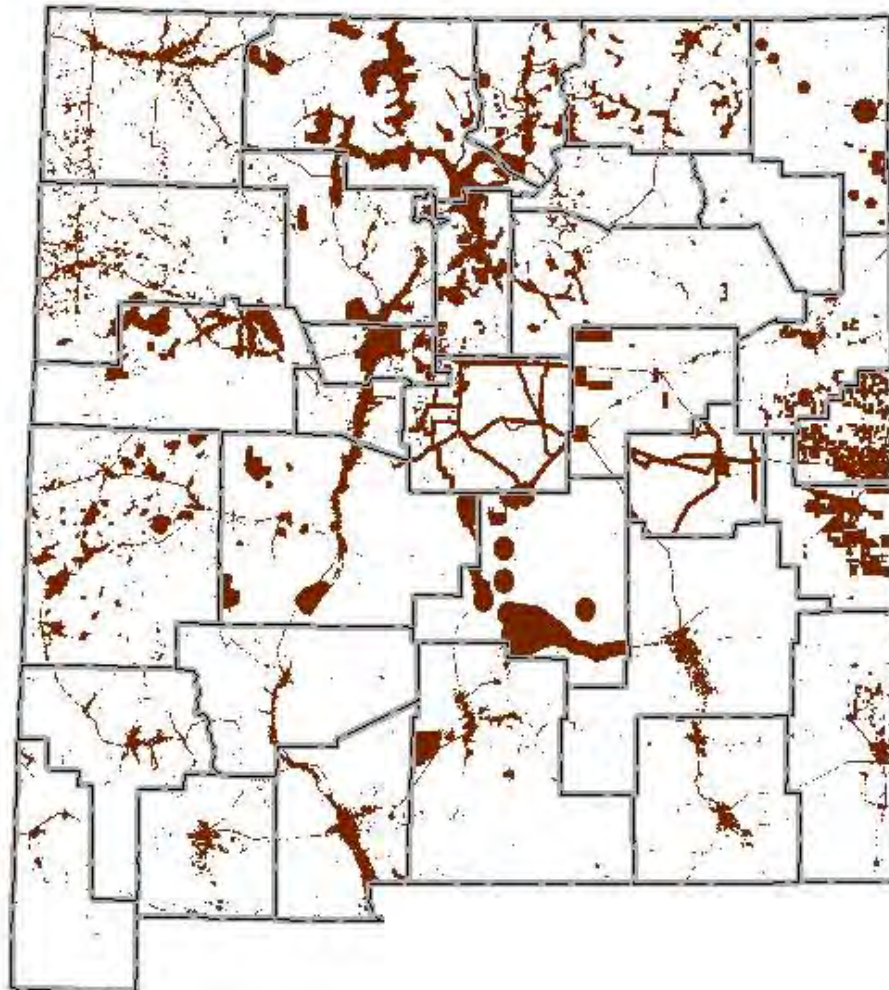
**Living with Fire in Northern New Mexico, a  
Workshop**

**November 16, 2013**

**Santa Fe Community College**

**Eytan Krasilovsky**

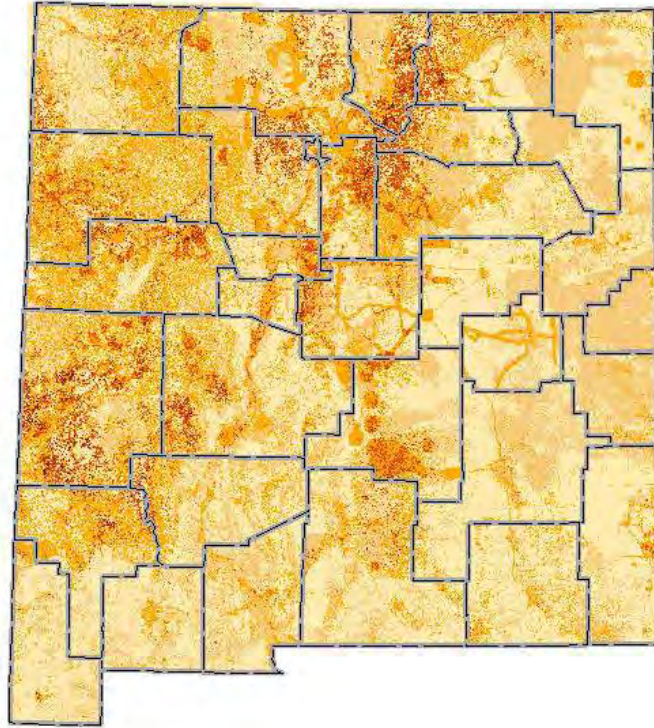
# New Mexico WUI, 2010



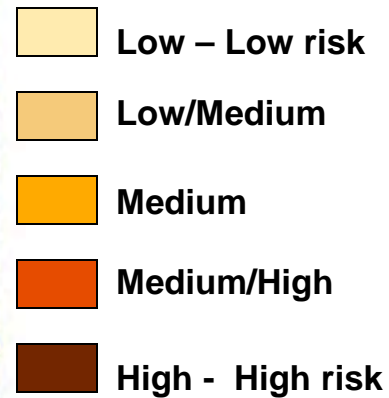
# Wildfire Risk

(from the 2010 Statewide Forest Assessment)

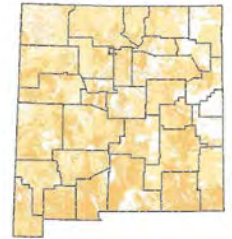
The intent of the wildfire risk data layer is to identify areas where planning and management are likely to reduce a relatively high risk of *destructive* fire.



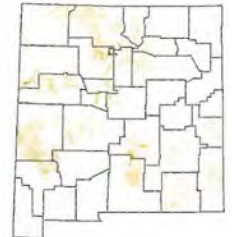
Wildfire Risk Priority



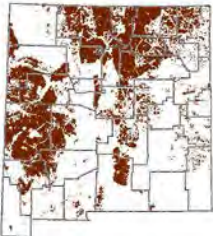
FRCC



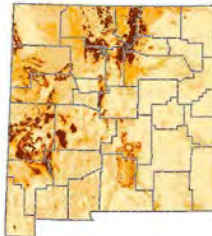
Ignition Probability



Crown Fire Potential



Flame Length



Rate of Spread



WUI



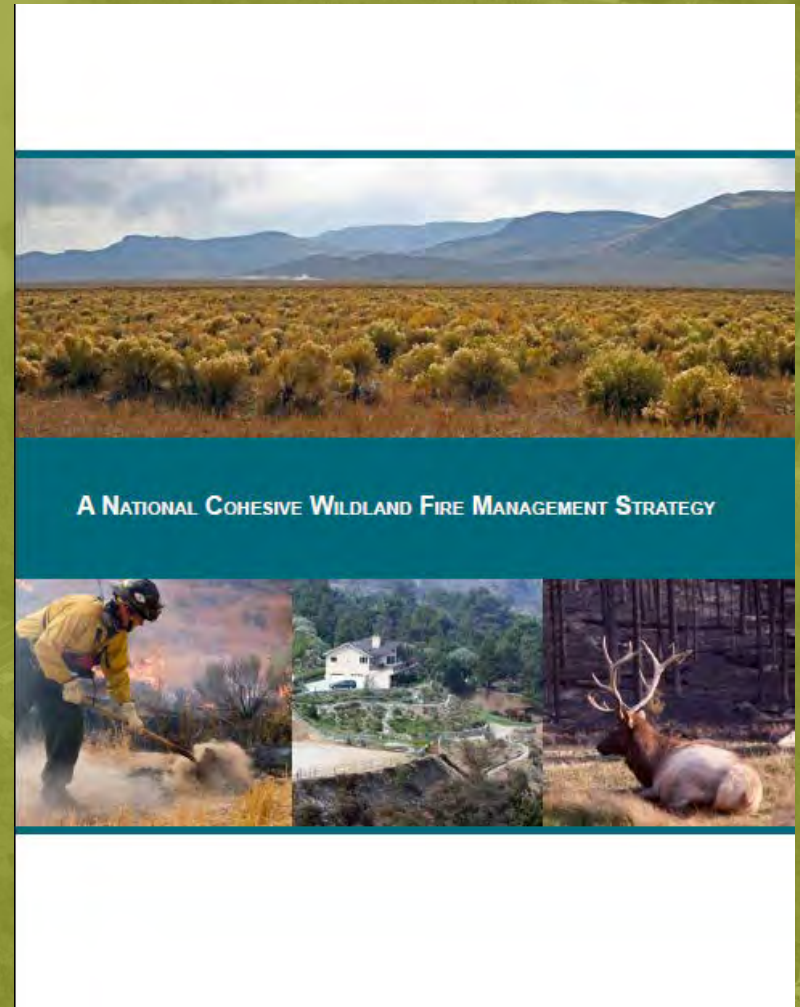


# What do our fire risk communities look like?



# Where did FAC come from?

- **National Cohesive Wildland Fire Management Strategy**
- <http://www.forestandrangelands.gov/strategy/overview.shtml>



# National Goals:

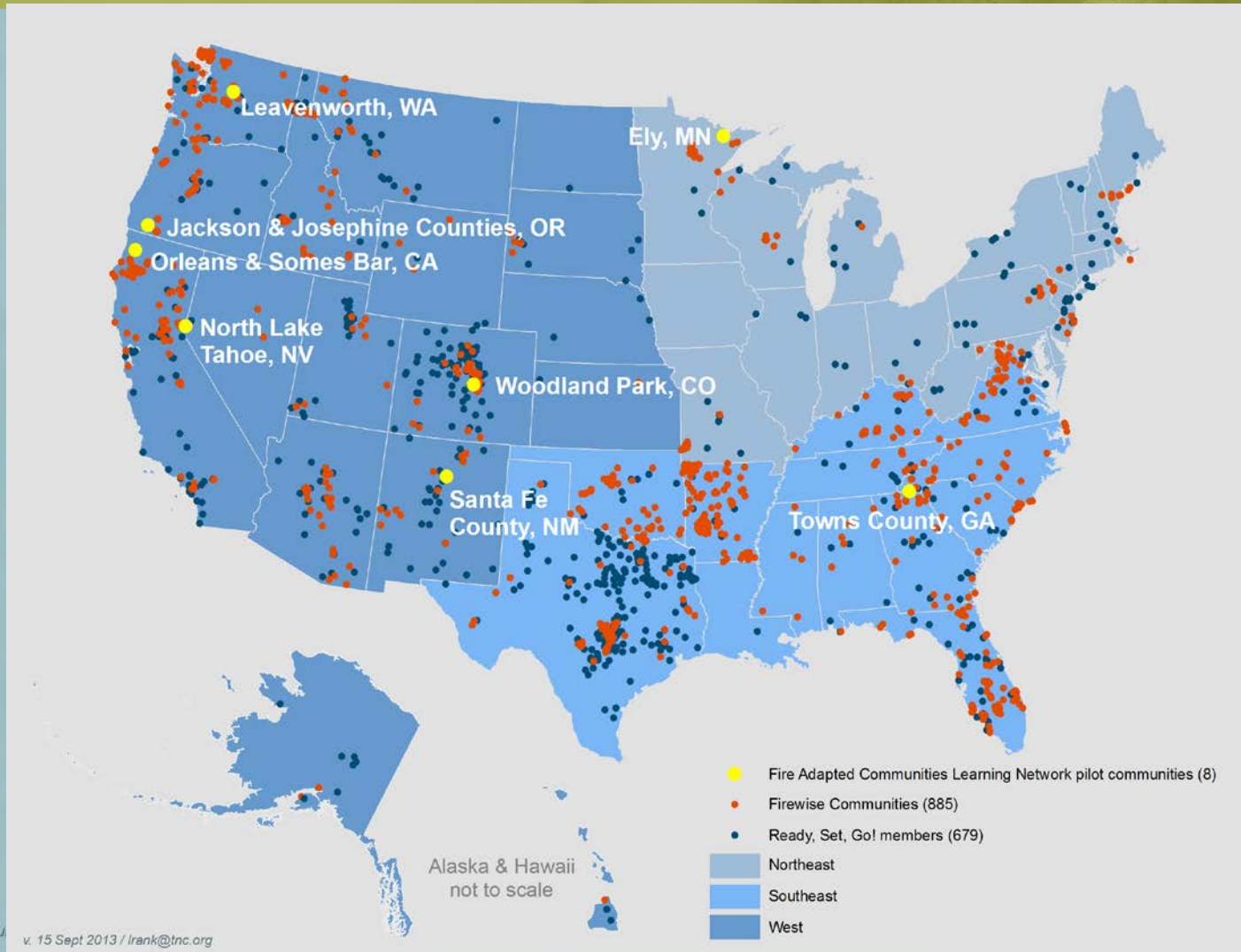
## Elements of a National Cohesive Wildland Fire Management Strategy



# The basics of fire adaptation: a concept



# Why a Learning Network?





# What will the NM Hub do?



## Becoming Fire Adapted

"Living in the West means **taking responsibility** for **yourself and your property** by making the choice to adapt to wildfire."

More Information

[www.fireadaptednewmexico.org](http://www.fireadaptednewmexico.org)

### NM FAC LN Kickoff

The New Mexico hub of the Fire Adapted Community Learning Network is a new effort being led by Santa Fe County Wildland Division and the Forest Guild. It is one of 8 hubs across the country trying to implement fire adapted community concepts ( [FAC Learning Network](#) ) as part of the Western Cohesive Wildfire Strategy and the Fire Adapted Communities program.

Read more

### Conference

The **Living with Fire in Northern NM**  
Fire, Forests and Communities

16 November, 2013 9am - 4pm  
Santa Fe Community College Jemez Rooms

Living with Fire



### Resources

FACs

What is FAC LN? ▸

### About Fire Adapted Communities

Fire Adapted Communities® (FAC) is a collaborative approach to reducing wildfire risks throughout an entire community. FAC helps connect all those who play a role in wildfire preparedness with organizations and programs that provide comprehensive resources for their specific wildfire preparedness needs. FAC is powered by a coalition of the nation's leaders in wildfire education, planning and preparedness, including the [USDA Forest Service](#), [US Department of the Interior](#), [Insurance Institute for Business and Home Safety](#), [International Association of Fire Chiefs](#), [National Association of State Foresters](#), [National Fire Protection Association](#), [National Volunteer Fire Council](#), the [Nature Conservancy](#), and the [US Fire Administration](#). These organizations connect community members with such resources as the [Firewise Communities® Program](#) for homeowners,

