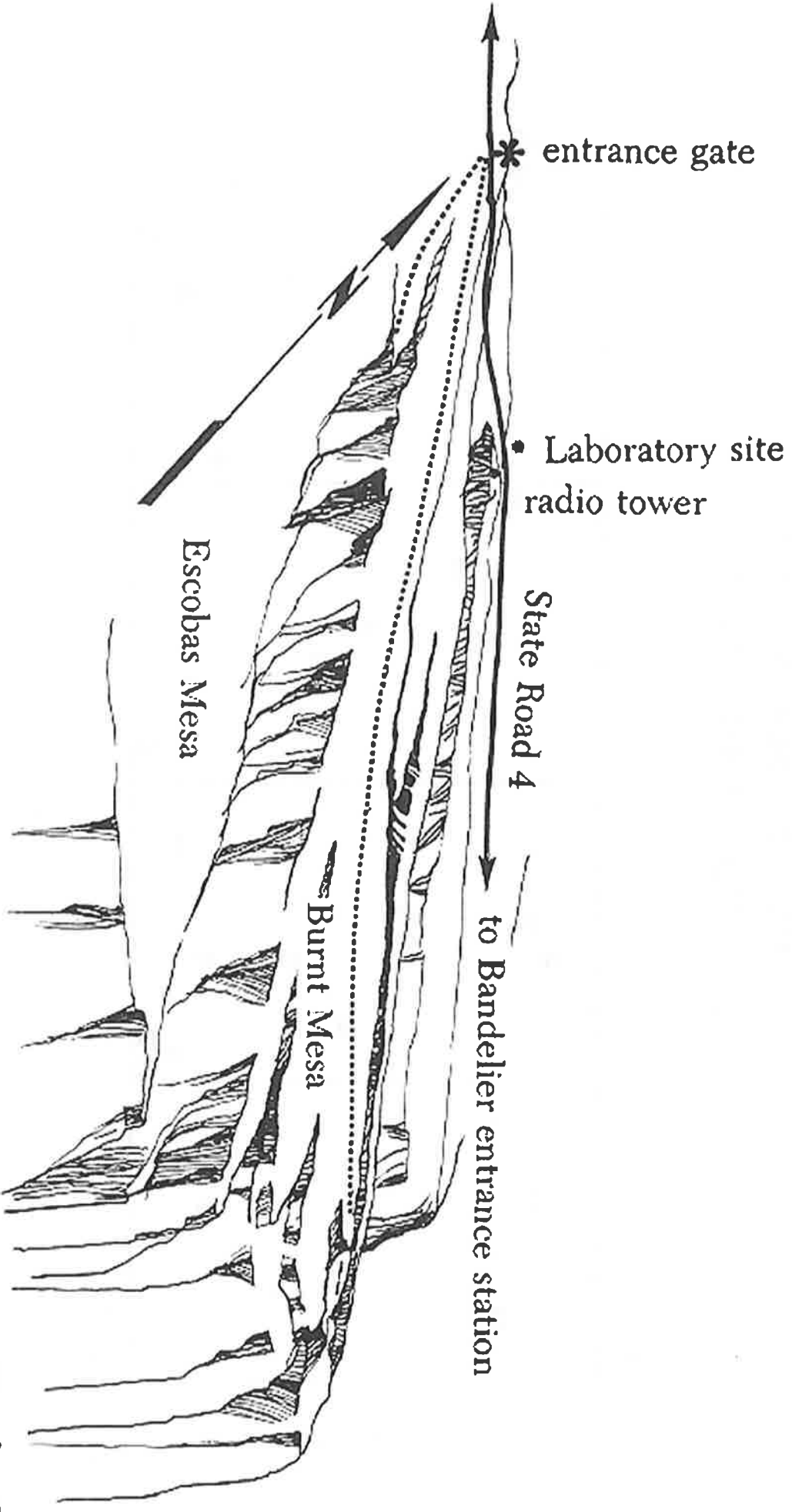




BURNT MESA



State Road 4 to:

end 2.8 mi 4.5 km level

Frijoles Canyon



1977

1978

1985



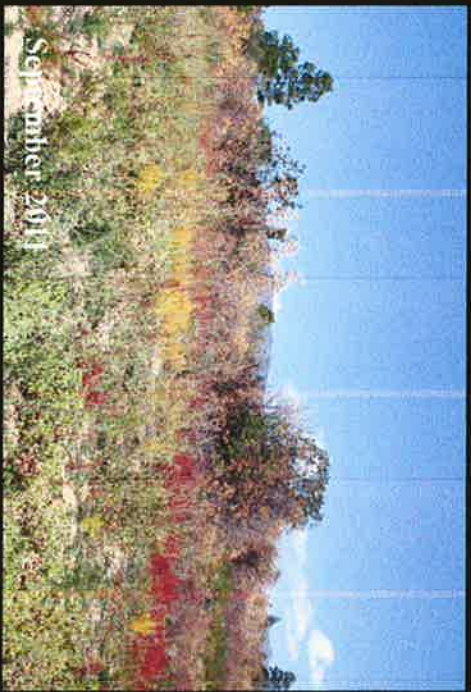
1998



2010



June 2011



September 2011

**The
Ecosystem
is dynamic
and ever
changing!**

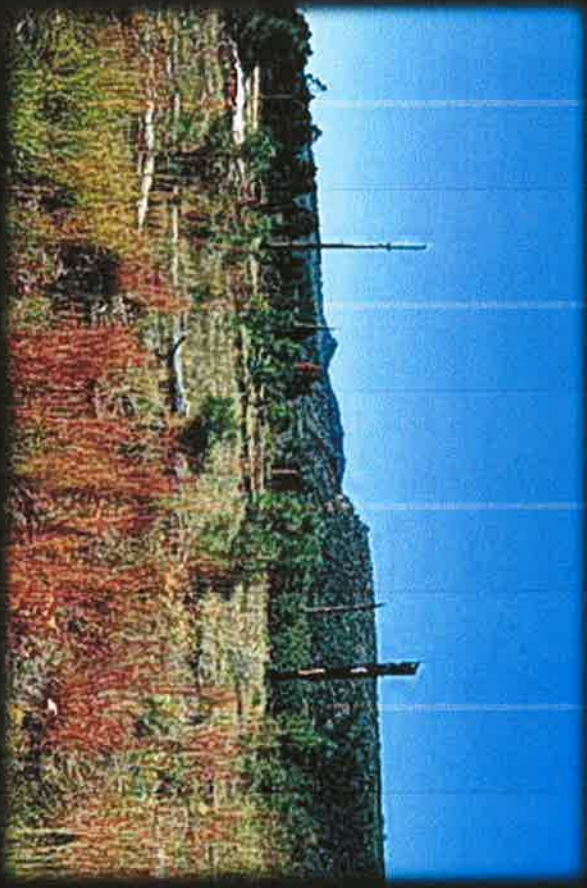
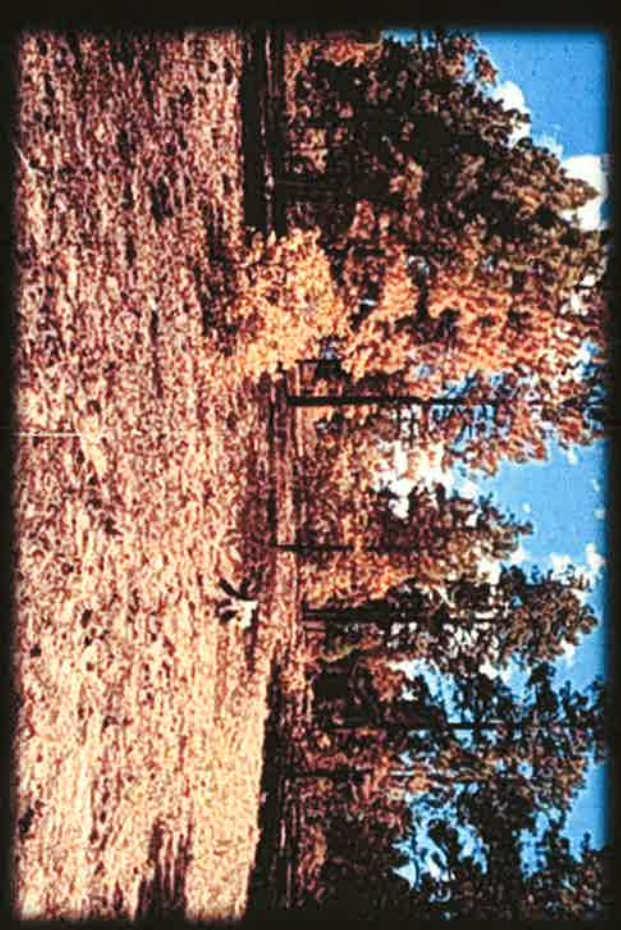


June 2011



Late Sept

Succession



crown fire

Fire year, 1977

surface fire

.



1976



1992

2011

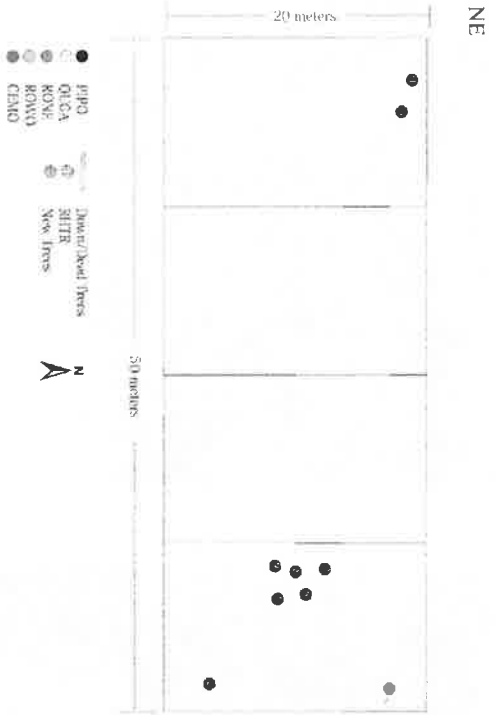


© 2011-2012 by [unreadable]

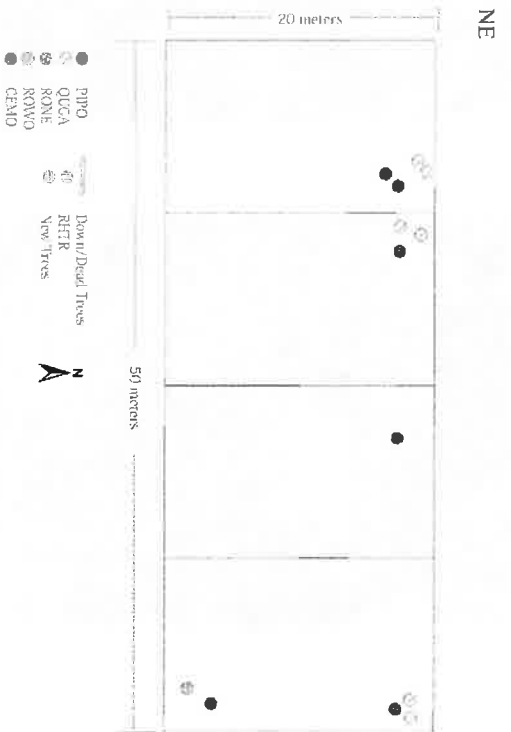




Tree Location Data
 Station: Burnt Mesa 2
 Date: 9/5/78



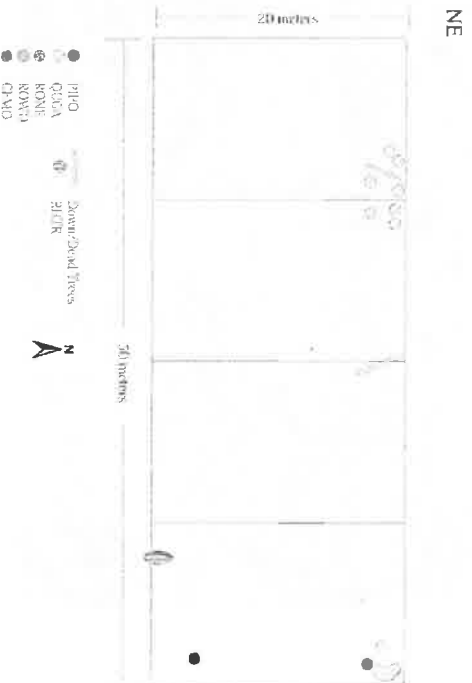
Tree Location Data
 Station: Burnt Mesa 2
 Date: 9/2/1998



LIVE TREES

Year	No. Trees	Trees/acre
1977	11	44
2010	2	8
2011	2	8
2014	???	???

Tree Location Data
 Station: Burnt Mesa 2
 Date: 10/14/2010

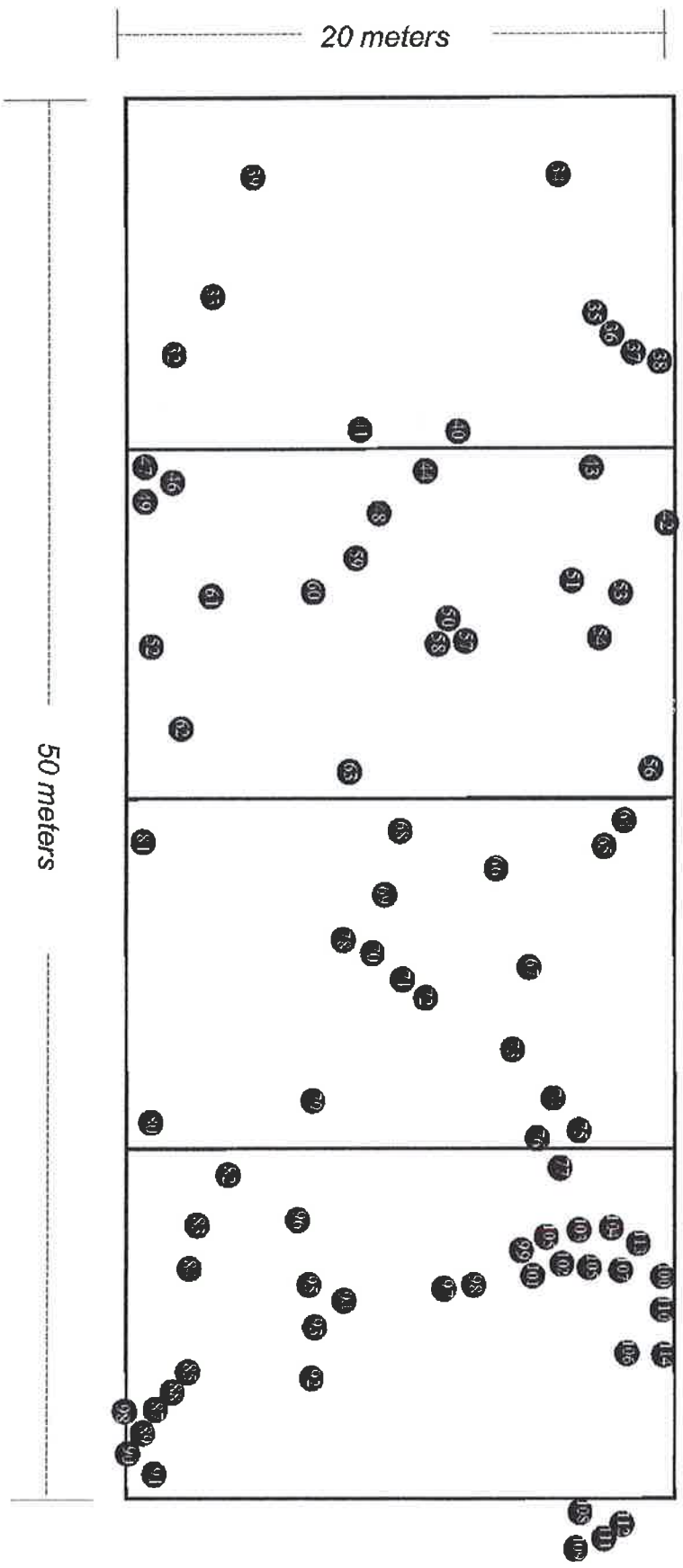


Tree Location Data

Plot: Escobas Mesa 2

Date: 9/07/1978

SE

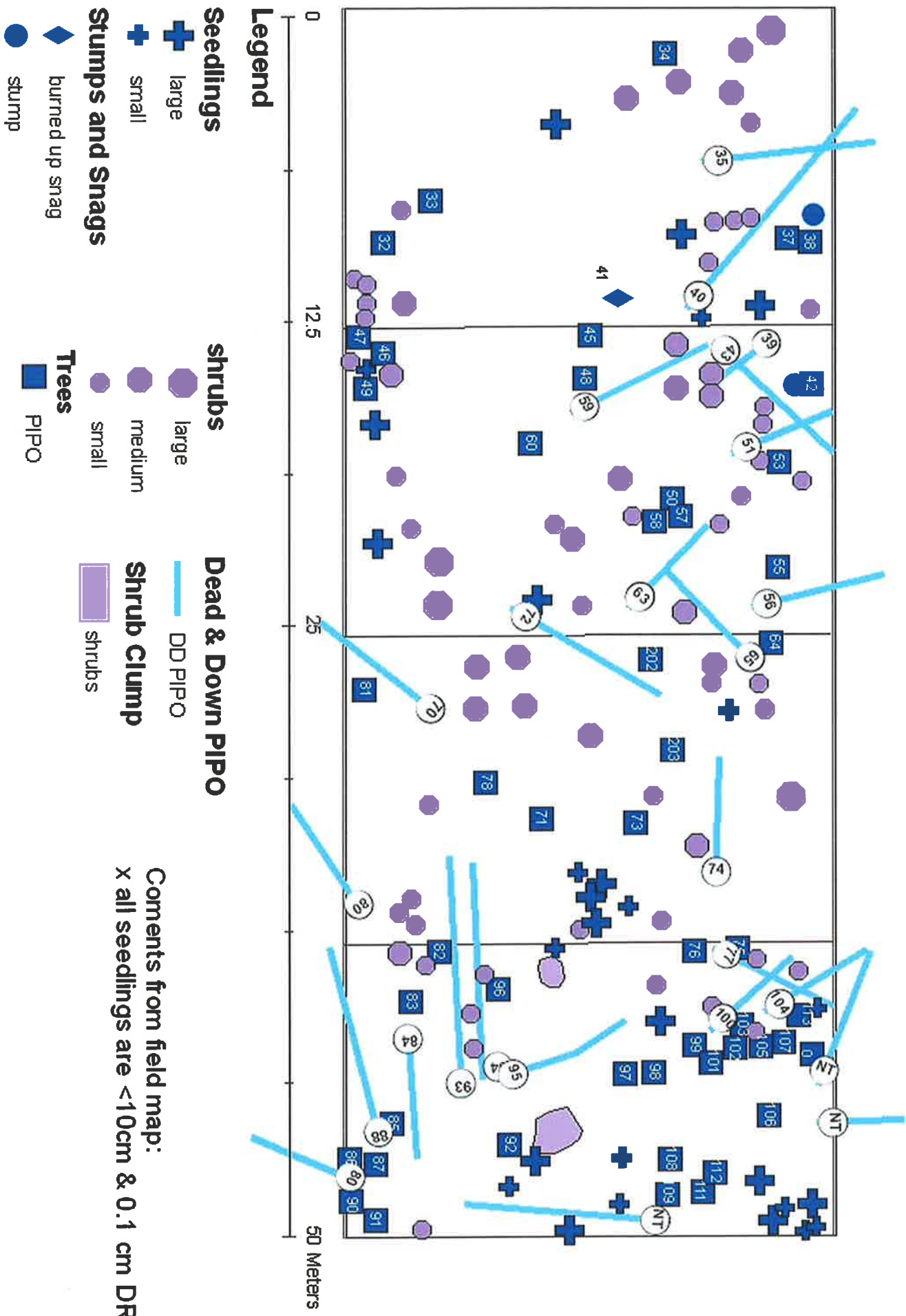


- | | | | | | | | |
|---|------|---|------|---|-----------------|---|-------|
| ● | PIPO | ○ | PIED | ● | New Trees | ● | Stump |
| ○ | QUGA | ○ | CEMO | ○ | Shrubs | ○ | CHINA |
| ○ | QUUN | ○ | RHTR | ○ | Snag | ○ | RICE |
| ○ | RONE | ○ | JUMO | ○ | Seedlings | | |
| ○ | ROWO | ○ | CEFE | ○ | Down/Dead Trees | | |

Tree Location Data

Plot: Escobas Mesa 2

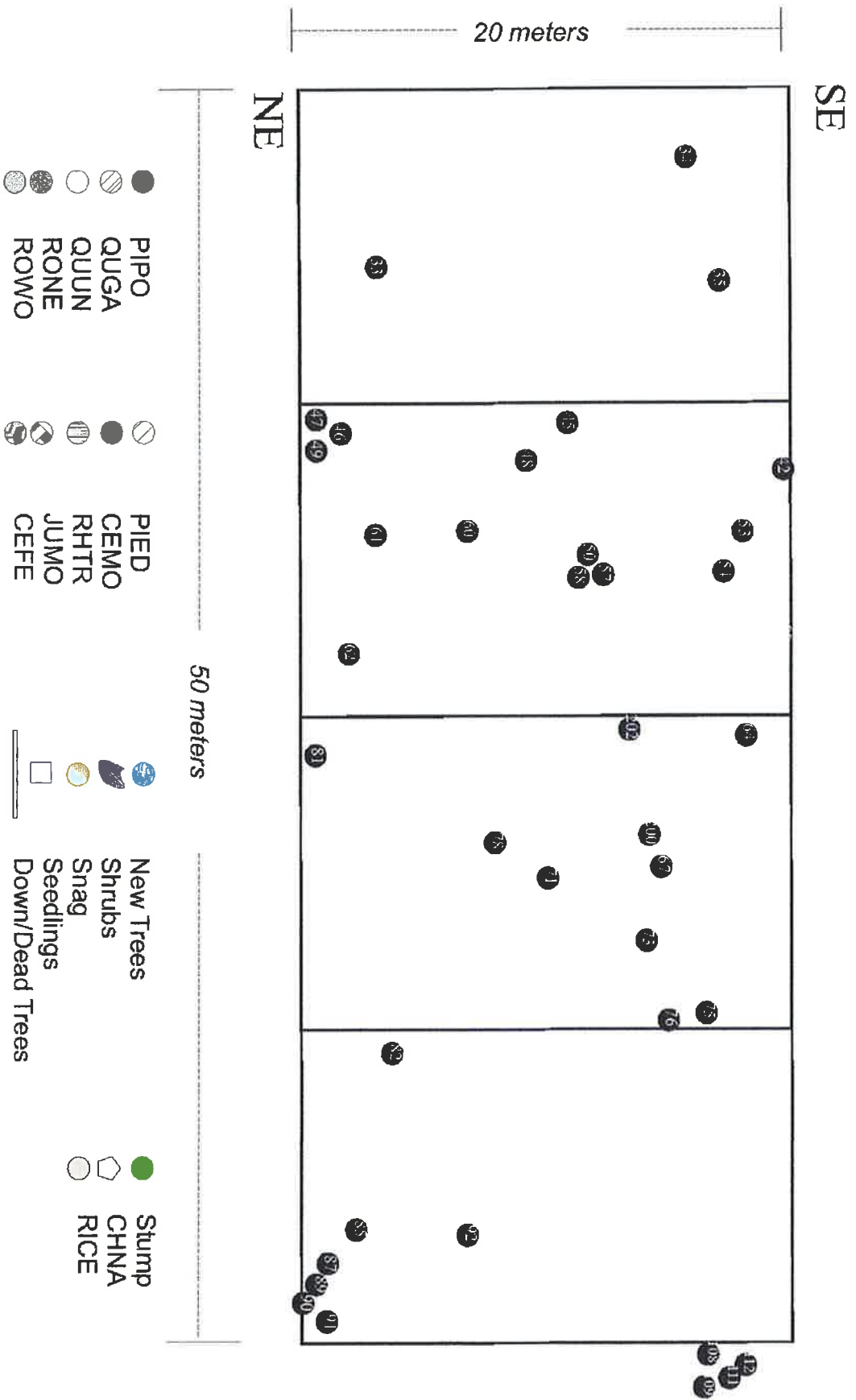
7/28/2010



Tree Location Data

Plot: Escobas Mesa 2

Date: 08/16/2012





*Please, Mister,
DON'T BE CARELESS*

PREVENT FOREST FIRES
Greater danger than ever!



**OUR MOST SHAMEFUL
WASTER!**

Remember - Only you can
PREVENT FOREST FIRES!