

Subscribe

Share ▾


Past Issues


Translate ▾

RSS

Check out our Winter 2015 Newsletter! Lots of great information...
To have your event or research listed in our next newsletter, [contact us!](#)



 [Follow on Twitter](#)

 [Forward to a Friend](#)



Events in the Southwest

Webinars:

"The Ability of Wildfire to Act as a Fuel Treatment," Jan 21, 2015 12pm MST. [Click here for more information.](#)

Fire related Conferences:

["Managing Fire. Understanding Ourselves: Human Dimensions in Safety & Wildland Fire."](#) IAWF. April 20-24, 2015 in Boise, ID.

[Fire Ecology and Management Congress: "Advancing Ecology in Fire Management."](#) AFE. November 16-20, 2015 in San Antonio, TX.

Publications:

-- ["Learning to coexist with fire."](#) Moritz et al. 2014.

-- ["Fire Behavior Field](#)

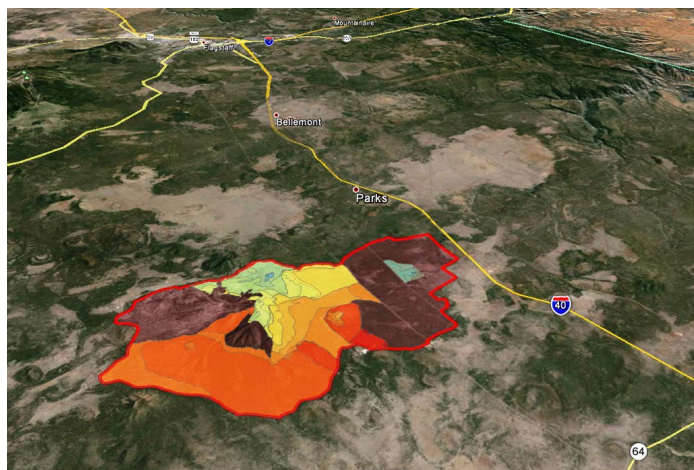
Greetings <<First Name>>!

WINTER 2015 NEWSLETTER

Featured Note

2014 Successes in Acres Burned

by Holly Krake, Acting Public Affairs Officer, USFS



Sitgreaves Complex progression map from August 15, 2014, courtesy of U.S. Forest Service.

In 2014, managers found many opportunities to manage wildfire for multiple resource benefits and restoration. The Kaibab, Coconino, Coronado and Santa Fe National Forests, as well as the Bureau of Indian Affairs, the San Carlos Apache Tribe, and the National Park Service all actively utilized this management strategy during the 2014 fire season. These decisions are not to be taken lightly as there are a myriad of factors involved. Following is an example that occurred on the Kaibab National Forest.

In the early weeks of July 2014, two lightning strike fires were

[Reference Guide.](#) NWCG, 2014.

--"[Squaring the triangle: Fire at San Carlos.](#)" Pyne 2014.

reported on Sitgreaves Mountain near Parks, Arizona. With one fire spreading swiftly high up on the eastern flank of the mountain, fire managers had two choices: suppression or restoration. Opting to consider restoration, fire managers started rapid consultation with specialists in silviculture, archeology, recreation, wildlife, and more. Within 48 hours, a consensus was reached and with the support of the forest plan and forest leadership, the 'tough' decision was made. "It would have been easy to put it out at an acre," said Incident Commander, Vic Morfin. "Instead we drew a 20,000 acre box around a 9,000 foot road-less mountain just outside the wildland urban interface (WUI) and pushed 'go.'" [CLICK HERE to read more...](#)



Funding Opportunity

The [Desert Landscape Conservation Cooperative](#) is embarking on a Climate-Smart Landscape Conservation Planning and Design project that will:

--produce spatially explicit data and info about focal resources;

--seek to understand the effects of climate change and other landscape stressors on natural resources;

--integrate social and economic info to understand what these resources might look like in the future;



Fires of Change

The Fires of Change project is designed to integrate fire and climate science with art to offer a unique interpretation for the northern Arizona community. Together with partners, [Landscape Conservation Initiative \(LCI\)](#) and [Flagstaff Arts Council \(FAC\)](#),

we selected 11 artists to participate.

In September, artists traveled with fire managers and scientists to the Grand Canyon to learn about fire and climate science. They will turn their learning



Learning Opportunities

Webinar: "How will climate change and management treatments affect Southwestern forests over the 21st century?" Jan 14th 11am MST. [Click here for more information.](#)

[Sierra Blanca Wildland Fire Academy](#) January 24-30, 2015 in Ruidoso, New Mexico.

[Arizona Wildfire Academy](#) March 7-13, 2015 in Prescott, Arizona.

[Preparing for Wildfires: Moving from Crisis to Opportunity, a Workshop for Cooperative Extension Educators and](#)

--result in collaborative adaptation responses that are useful and implementable by our partners

For more information, search announcement number **F15AS00055 at: grants.gov. **Deadline January 19, 2015.***

experience into art pieces for **September 2015 exhibit** in conjunction with the Flagstaff Festival of Science. [Click here to view field trip materials.](#)

[Community Leaders.](#)
March 10-12, 2015 in Tucson, Arizona.

The newest issue of *Fire Ecology*, Issue 10(3), December 2014, is now available. [Click here to view current issue.](#)

[Follow us on Twitter!](#)

- Winter 2014 Newsletter - SW Fire Science - <http://t.co/4JsdlHtzGa> 9:43AM
- RT @NWFireScience: WRDC Wildfire Conference for Extension Educators - <http://t.co/BrlcdGnuuy9> 12:03PM
- RT @forestguild: Interesting tid bit... Trees & ice: Life & death in the forest ('98 was "the big one" for VT) <http://t.co/2TuOw4NGAH> 11:07AM

Contact us at: swfireconsortium@gmail.com

*Copyright © 2015 Southwest Fire Science Consortium
All rights reserved.*

Barb Satink Wolfson
Southwest Fire Science Consortium
NAU School of Forestry
Box 15018
Flagstaff, AZ 86011

Tel: 928.523.1148

MailChimp.

[unsubscribe from this list](#) | [update subscription preferences](#)